



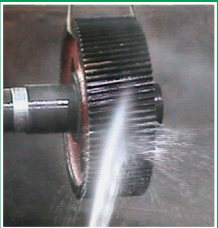
# VpCI®-391 REMOVABLE COATING

## EASY TO APPLY



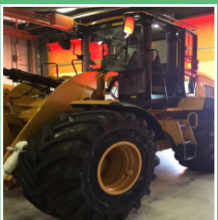
- Water-based
- Can be applied via spray, brush, roll, or dip
- Single component system—no mixing needed
- Low VOC

## EASY TO REMOVE



- VpCI®-391 can be easily removed using alkaline cleaners

## EXTREME PROTECTION



- VpCI®-391 is used in the toughest climates around the world, including industrial and offshore environments



## Protect from corrosion during manufacturing, shipment, and storage.

Cortec's VpCI®-391 water-based removable coating delivers exceptional corrosion protection for indoor and outdoor applications. VpCI®-391 dries to a thin, clear film which is virtually unnoticeable, while protecting both unpainted and painted surfaces, as well as preventing dissimilar metal corrosion.

## TYPICAL USES

- Heavy Equipment
- Machinery
- Vehicles
- Piping
- Structural Steel

## KEY BENEFITS:

*Easy to Apply and Remove • Rust Preventative • Transit Coating • Long-Term Storage • Export Shipments • Durable • Harsh Conditions • Outdoor Storage • Tintable*